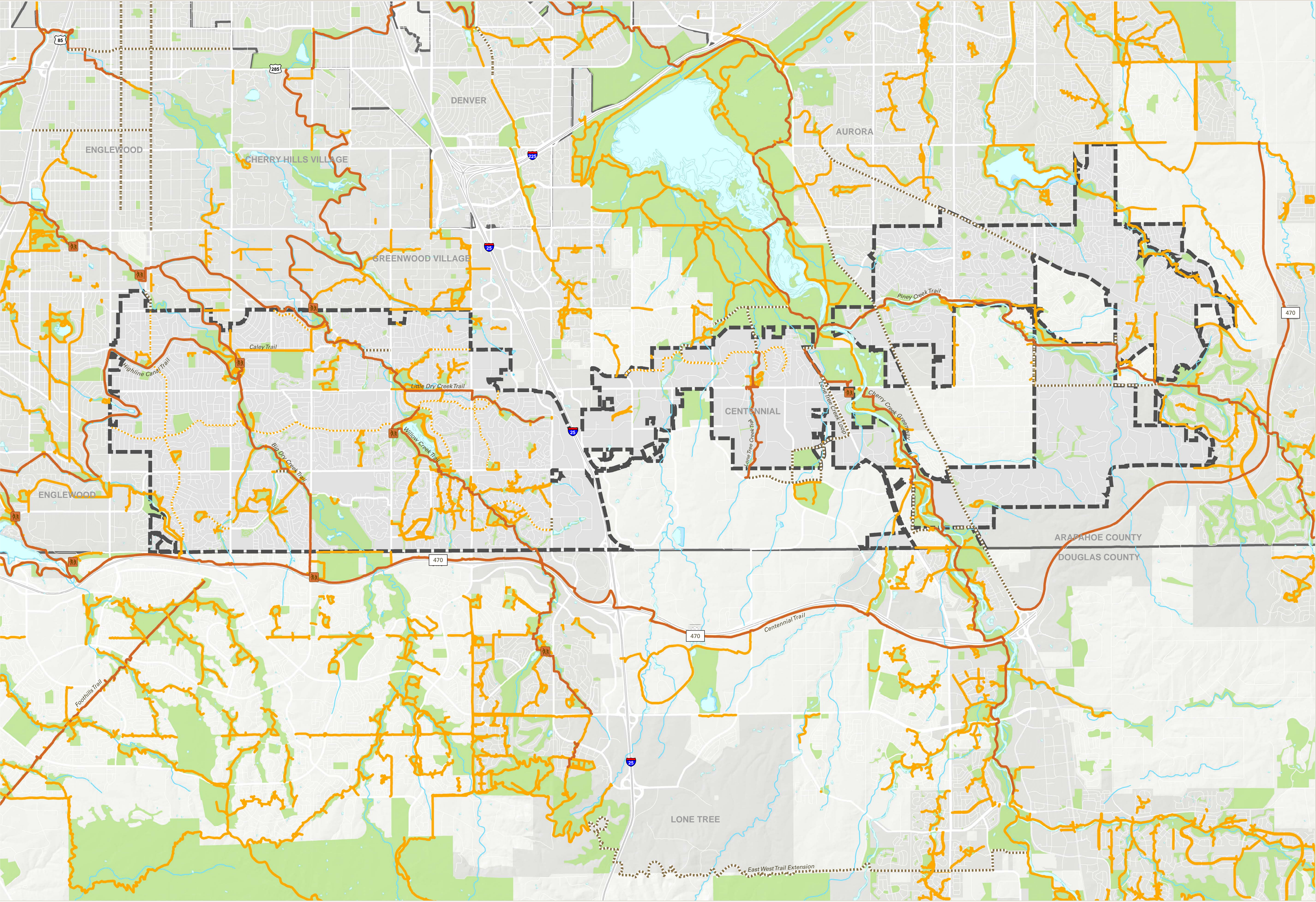


CITY OF CENTENNIAL TRAILS INVENTORY



LEGEND

- Regional Trails
- Local Trails
- On-street bike routes in City of Centennial
- Proposed Trails
- Existing parks, open space, cemeteries, golf courses, and school parks
- Trailheads with Parking (SSPRD data)
- Lake or Reservoir
- Waterway
- Jurisdictional areas
- Unincorporated areas

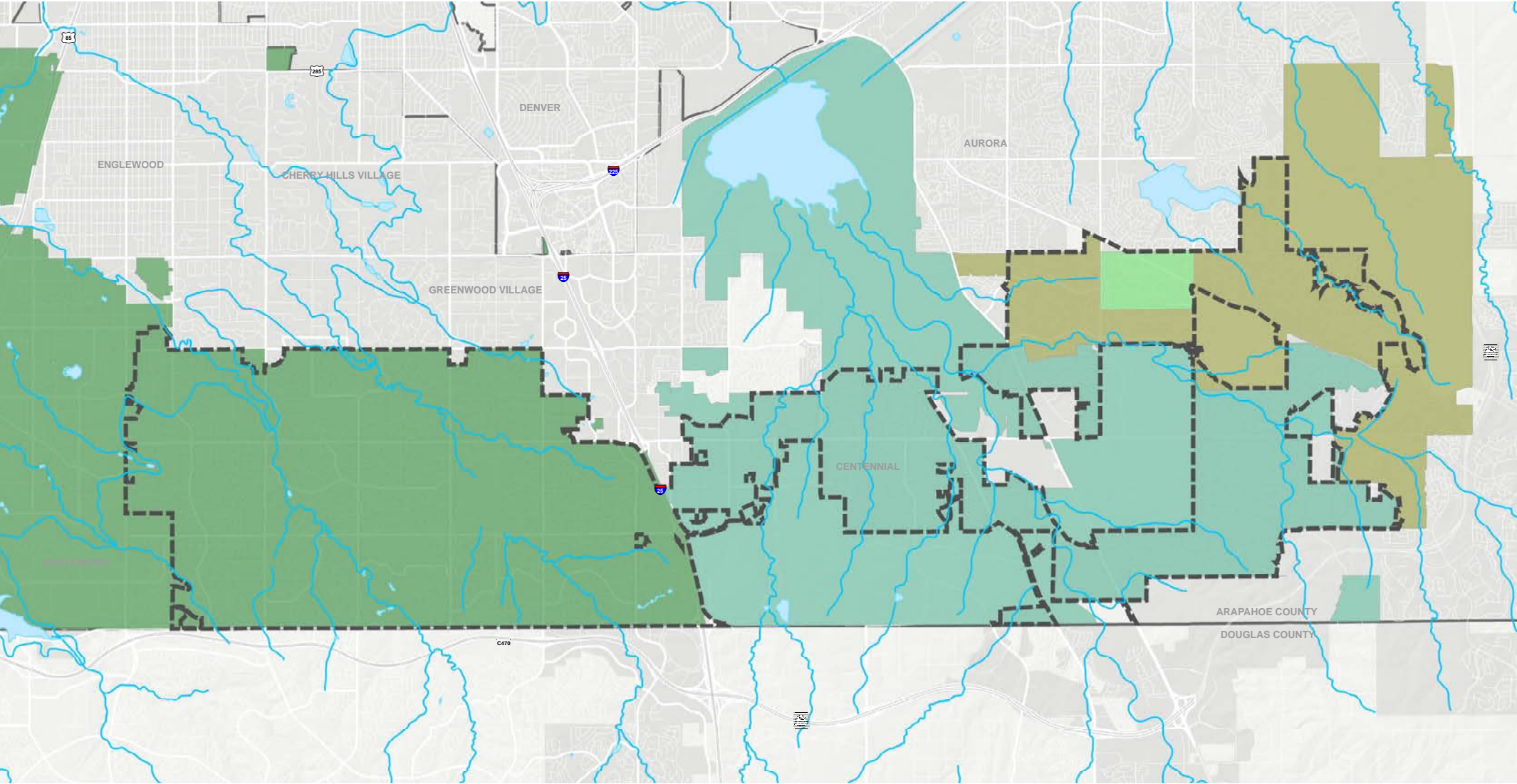
WHAT IS A REGIONAL TRAIL?

Regional trail connections provide significant pedestrian and cyclist access across boundaries of cities, neighborhoods, and districts. These trail assets are primarily located along a major roadway, waterway, or through an open space. Regional trails are located off-street and are comfortable for a variety of ages and cyclist skill-levels.

WHAT IS A LOCAL TRAIL?

Local trails provide connections on a smaller scale, mostly within a city, neighborhood, park, or district. Similar to regional trails, local trail assets may be located along a roadway, waterway, or open space but primarily serve as a localized connection. Without conflict with vehicles, local trails also cater to a variety of ages and cyclist skill-levels.

RECREATION DISTRICTS



DISTRICTS LEGEND

- Arapahoe County Recreation District
- Arapahoe Park and Recreation District
- Smoky Hill Metro and Recreation District
- South Suburban Park and Recreation District

DATA SOURCES

- City of Centennial on-street bike routes to regional trails (City of Centennial, 2016)
- East West Trail Extension (Douglas County, 2016)
- DRCOG trails data (DRCOG, 2015)
- South Suburban area trails (from the South Suburban effort, date unknown)
- Douglas County trails (Douglas County, 2014)
- Arapahoe County trails (mostly from City of Aurora source layer, 2016)
- Proposed trails in Centennial area (Arapahoe County data, provided by City of Centennial, 2016)
- Trailheads (South Suburban, 2016)