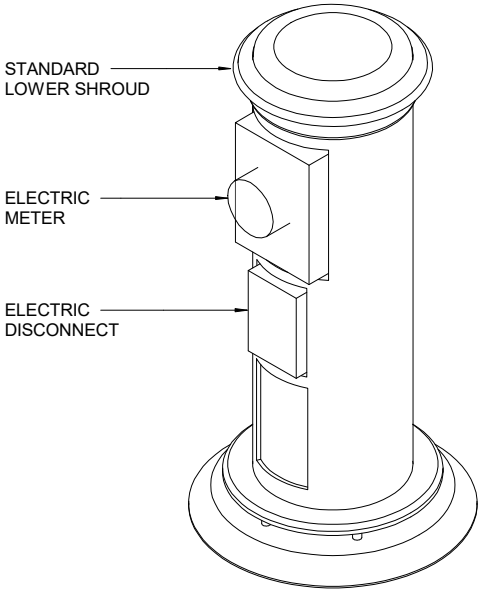
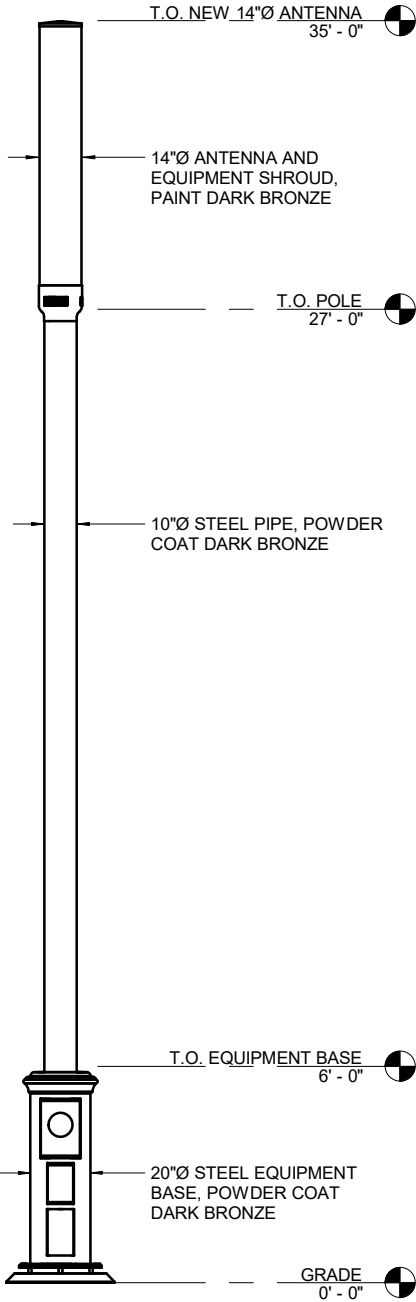




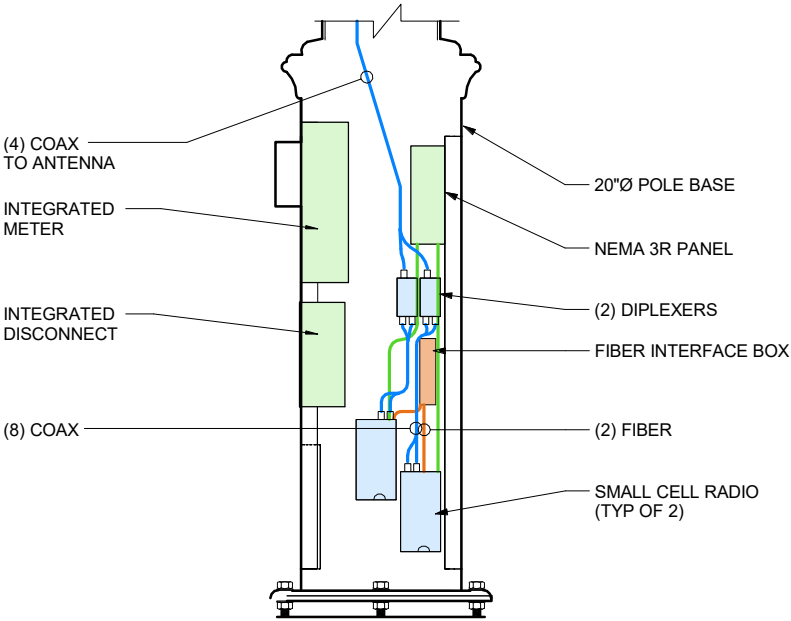
WITHOUT LUMINAIRE



PHOTOSIM AND ELEVATION SCHEMATIC



POLE BASE ISOMETRIC VIEW

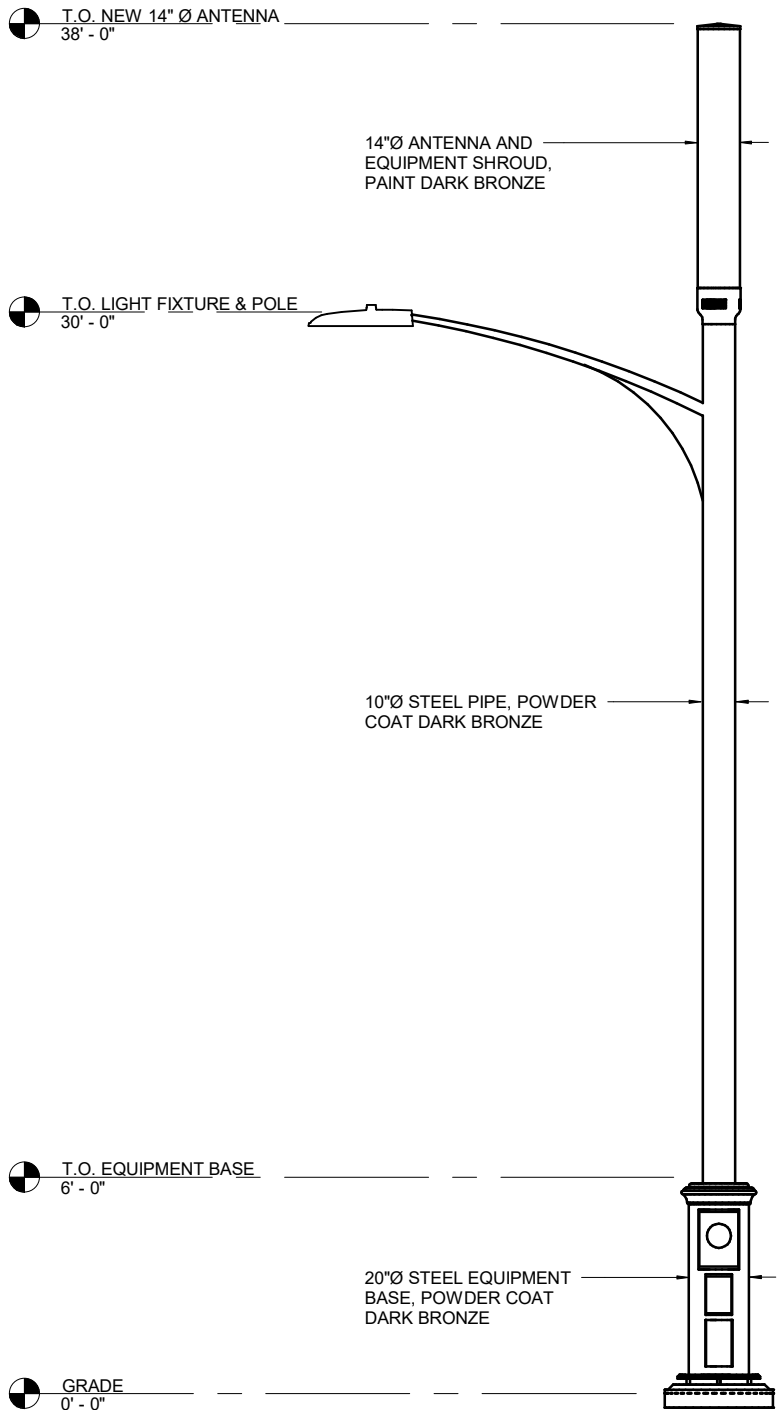


POLE BASE SECTION





PHOTOSIM AND ELEVATION SCHEMATIC



MILLERBERND MANUFACTURING COMPANY  
SP3 (PIPE ARM) CARBON STEEL

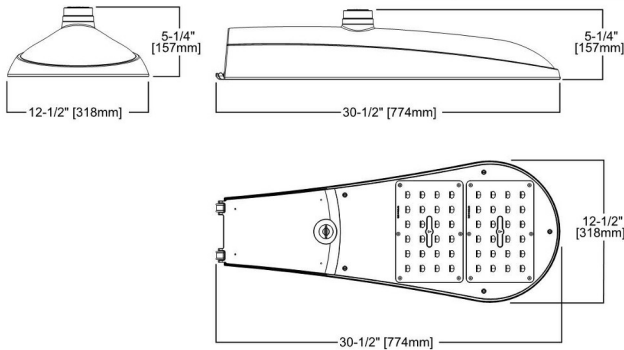
**ARMS**  
SP3 ARMS ARE FABRICATED FROM 2" (2.38" O.D.) SCHEDULE 40 PIPE. EACH SP3 ARM ATTACHES TO THE POLE SHAFT WITH A CAST STEEL, MATING 4-BOLT SIMPLEX BRACKET (OPTIONAL CAST STEEL, MATING 1-BOLT (1BS) OR 2-BOLT (2BS) SIMPLEX BRACKETS ARE AVAILABLE. SP3 ARMS HAVE A RISE OF 1 FOOT FROM THE POLE TOP.

**HARDWARE**  
ALL HARDWARE AND FASTENERS ARE SUPPLIED WITH EACH POLE ASSEMBLY. ALL STRUCTURAL FASTENERS ARE GALVANIZED HIGH-STRENGTH CARBON STEEL.



ARM ATTACHMENT OPTIONS

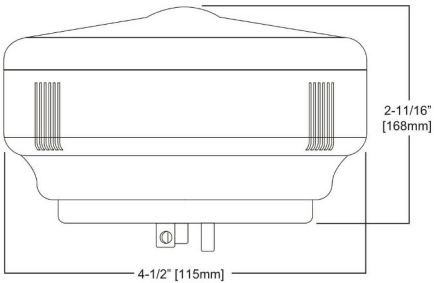
**PIPE ARM INFORMATION**



**ARCH-M ARCHEON MEDIUM**

THE ARCHEON MEDIUM LED ROADWAY LUMINAIRE DELIVERS ALL THE PERFORMANCE BENEFITS OF THE LATEST EATON LED PLATFORMS AND TECHNOLOGIES WITH A MODERN, YET FAMILIAR COBRAHEAD FORM FACTOR. THIS DISCRETE LED SOLUTION WITH THE PATENTED, HIGH-EFFICIENCY ACCU-LED OPTICS SYSTEMS, PROVIDES UNIFORM AND ENERGY CONSCIOUS ILLUMINATION FOR MUNICIPAL STREETS AND HIGHWAYS. OUR CUSTOMER FOCUSED FEATURES INCLUDE A SINGLE LATCH, TOOL-LESS ENTRY, INDUSTRY LEADING SURGE PROTECTION OPTIONS AND SUPERIOR LUMEN MAINTENANCE AND PERFORMANCE, IN ALL AN ECONOMICAL DESIGN. AVAILABLE IN 13 STANDARD LUMEN PACKAGES PER OPTIC.

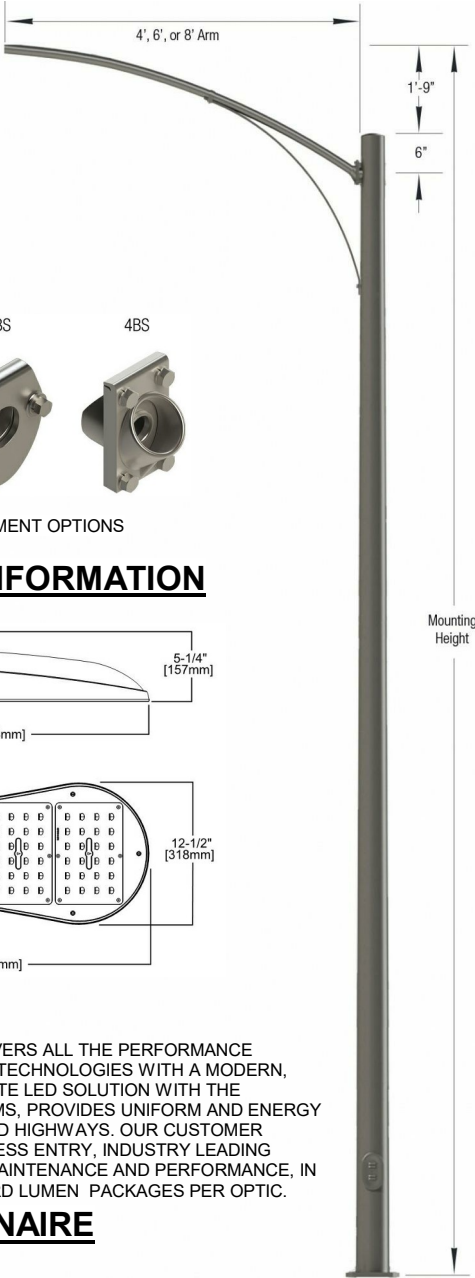
**LUMINAIRE**



THE CONNECTWORKS iSLC-3100-7P IS AN INTELLIGENT WIRELESS LIGHTING CONTROLLER WITH EXCEPTIONAL FAULT TOLERANCE AND A MULTITUDE OF FEATURES. EACH iSLC-3100-7P PROVIDES INTELLIGENT ON/OFF SWITCHING, DIMMING CONTROL, GPS (OPTIONAL) HIGHLY ACCURATE POWER METERING, OPTIONAL ANALOG AND DIGITAL SENSOR INPUTS AND CONSTANT STATUS AND HEALTH MONITORING OF YOUR LIGHTING FIXTURES.

**WIRELESS LIGHTING CONTROL**

**WITH LUMINAIRE**





TRAFFIC SIGNAL W/  
INTERNAL EQUIPMENT

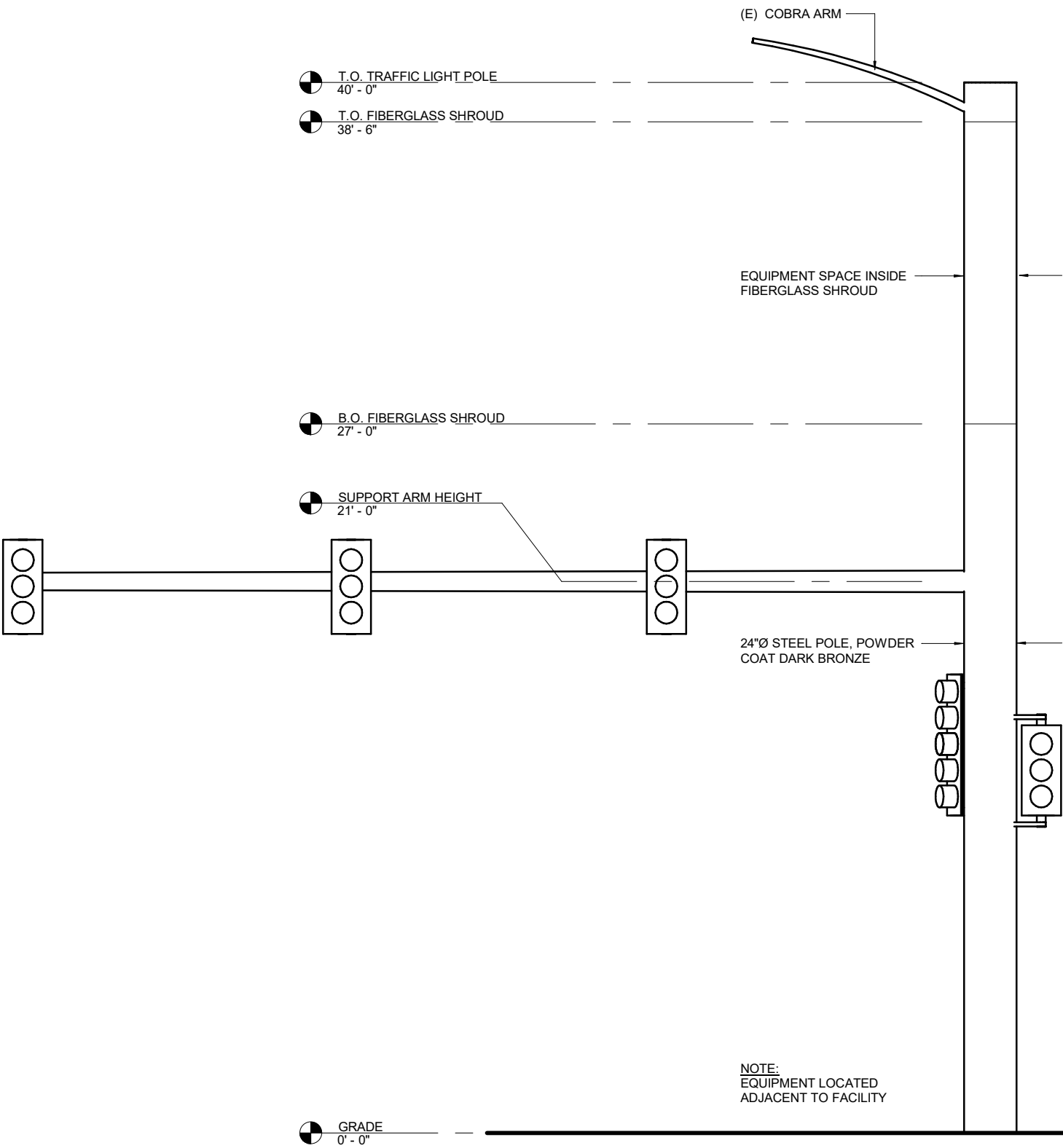


PHOTO AND ELEVATION SCHEMATIC